



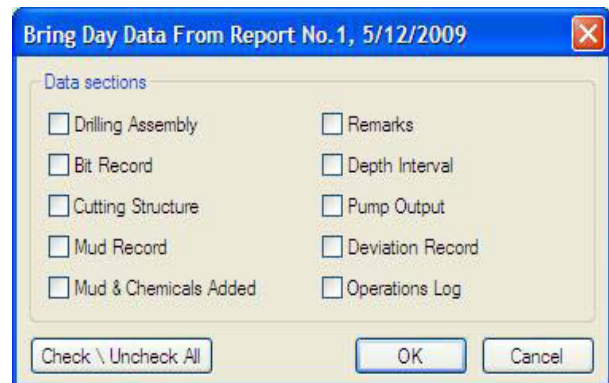
Tour Sheet Reporting Software

Features, Advantages and Benefits

- Tour Sheet's user agreement permits installation of the software on multiple computers, making it a cost-effective solution to enhancing the efficiency of daily drilling-report preparation.
- The InstallShield® setup tool enables quick and easy installation of Tour Sheet.
- The familiar Microsoft® Windows® desktop interface reduces the learning curve of personnel charged with preparing the reports, making the initial implementation of Tour Sheet a more seamless process.
- Tour Sheet's bring-forward feature allows users to eliminate repetitive entry of data, such as bottomhole assembly information, pump information, and deviation records, thereby saving time and minimizing the potential for reporting errors.
- Tour Sheet comes with several built-in security features:
 - A firewall and 256-bit Secure Sockets Layer (SSL) encryption protect Tour Sheet data on the server from unauthorized access.
 - Tour Sheet enables an administrator to vary level of access to data, thereby adding a layer of protection to sensitive information.
 - The application's database can be configured to perform nightly backups, minimizing the risk of data loss.



Tour Sheet's user-friendly interface facilitates navigation within the application.



Tour Sheet's bring-forward feature eliminates redundant data entry.



Tour Sheet Reporting Software

Features, Advantages and Benefits (continued)

- The Web version has several unique capabilities:
 - It allows offsite users to view the reports from any location with Internet access; this feature enables key stakeholders to monitor pertinent data in the reports and to make critical decisions without incurring the need to travel to the wellsite, saving time and money.
 - It enables users to download and export daily payroll reports in CSV format, allowing quick and easy incorporation of the data into financial and payroll applications, such as Hyperion, QuickBooks®, and SAP software; as such, Tour Sheet expands the applicability of the mandatory drilling reports, eliminates duplication of efforts, and enhances operational efficiency.
 - Similarly, it permits users to download data for a specified time period in CSV format, thereby facilitating preparation of customized reports based on the information contained in the drilling reports.

Employee report	
Employee:	Drillers (In-house)
Date Interval:	From: 5/1/2009 To: 5/10/2009
Well:	ALL WELLS
[Search]	
Export to CSV	
Hours	Rate
12	0.00

Tour Sheet users can download and export daily payroll reports in CSV format for added convenience and efficiency.

Operation Log Reports					
Operation code:	D - DRILLING				
Date Interval:	From: 5/1/2009 To: 5/10/2009				
Well:	ALL WELLS				
Group by Well:	<input type="checkbox"/>				
[Search]					
Export to CSV					
Well No	Date	Shift	Well Name	Location	Remarks
2.016	05/04/2009	07:30:00	12.0000	04.3000	CONT. TO DRILL @ 14427' T=14407' @ 550 GPM, 37.20 PSI. SUPER FOR WEB
Actual					170. 3200 R/C/D 13.300 PSI 08.700 543.4000 01 02.00
2.016	05/04/2009	08:30:00	05:00:00	01:00:00	DRILLS ON NEWFORMATION: 84412' T=14427' @ 850 GPM, 1100.25
Actual					300. 8000 05. TOR 04, 3004 PSI, CONC. 07.150 UP 1050' ABOVE DML.
2.016	05/05/2009	08:30:00	12.0000	08:30:00	CONT. DRILLING @ 14400' T=14300' @ 500 GPM, 30.50 PSI. 30.50 W/30' P=24
Actual					TORQUE PSI W/1. 0000 3.00 3200 ROT. 0000. 0000 PSI @ 15000' T=
2.016	05/05/2009	08:30:00	12.0000	08:30:00	NOTE: SHOULD NOT ROTATE THIS DUE TO EXCESSIVE TORQUE.
Actual					PLUMP PSI 160 PSI @ 40 3000 30' 5000'
2.016	05/05/2009	01:30:00	07:30:00	04:00:00	DRILLING @ 14400' T=14300' @ 1000 GPM, 3000 PSI W/30' TOR. 0000
Actual					100. 1000 04. 0000 @ 300 GPM, 1500 PSI W/30' T & N 1000' W
					12.3 0000 04.00

Data for a specified time range can be downloaded in CSV format for more efficient reporting.

Options

- Tour Sheet is available in both intranet- and Web-based versions.

InstallShield, Microsoft, Windows, and QuickBooks are registered trademarks of their respective owners.