

# Red Eye® 2G Hot-Tap Water-Cut Meters Installed Offshore in Total Crude Export Line Provide Real-Time Flow Measurements for Proactive Production Management

## Objectives

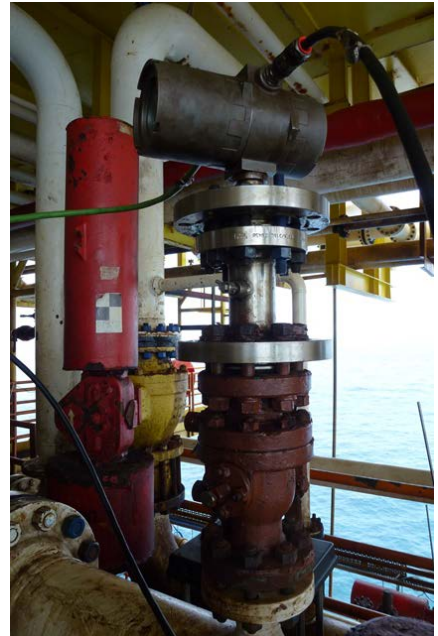
- Provide continuous, accurate water-cut measurements on 6-in. export line integrated with the liquid metering skid.
- Eliminate the need for the conventional type of basic sediment and water (BS&W) analysis using manual hand-sampling.
- Avoid shutting down pipelines during the installation and retraction of the new metering system.

## Our Approach

- Weatherford installed a Red Eye 2G hot-tap water-cut meter on the 6-in. export line at three platform locations in the metering skid. The meters were installed in a flowing live condition, so there was no need to shut down the pipeline during installation or retraction.

## Value to Client

- The Weatherford Red Eye 2G hot-tap water-cut meters provided the client with continuous and accurate water-cut measurements and eliminated the need for manual hand-sampling.
- Installation of the Red Eye 2G hot-tap water-cut meters was cost effective because it eliminated shutdown or deferred production.
- Integration of the flow measurement system enabled the client to monitor total oil and water production for entire wells. That enabled the client to optimize and proactively manage well production based on real-time data rather than estimates-based manual hand-sampling.



*The Weatherford Red Eye 2G hot-tap water-cut meter was integrated into the flow metering skid without shutting down the pipeline during installation.*

### CLIENT

Petronas Carigali Sdn Bhd (PCSB)

### LOCATION

Malaysia

### FIELD

Samarang

### WELL TYPE

Offshore oil flowline

### FLOW RATE

~48,000 to 50,000 BLPD

### PRODUCTS/SERVICES

Red Eye 2G hot-tap water-cut meters



Red Eye is a registered trademark of Weatherford in the US and the United Kingdom.