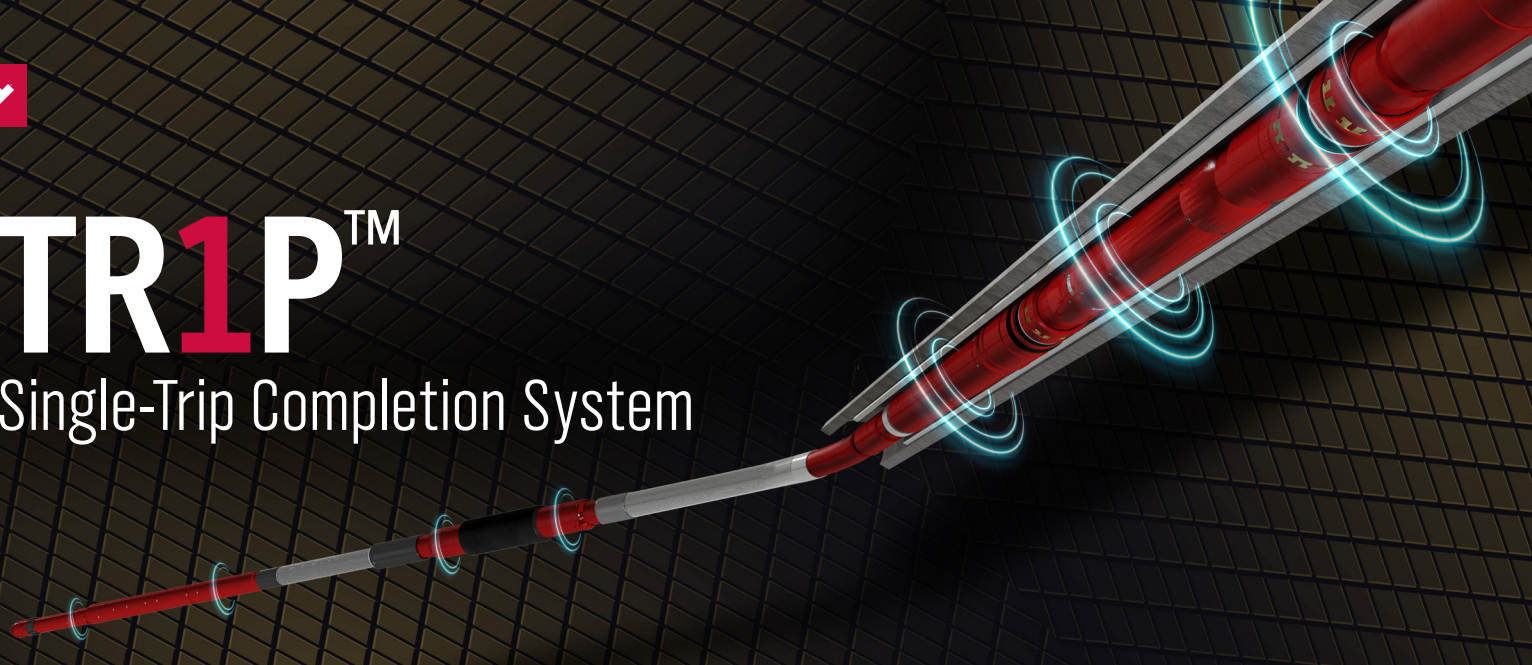




# TR1P™

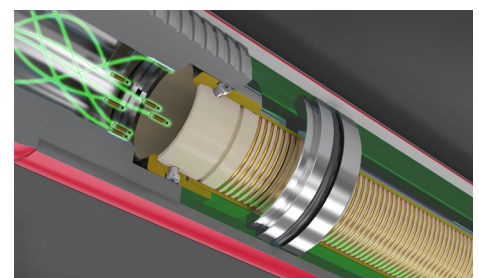
## Single-Trip Completion System



### DISCOVER THE POWER OF ONE Install the upper and lower completion in one trip with remote activation technology.

The Weatherford TR1P™ single-trip completion system enables you to install the upper and lower completions in just one trip. The world-first system simplifies your operations and reduces your completion installations times by up to 60 percent.

This game-changing deepwater solution combines radio-frequency identification (RFID) technology and elements from our premium completions technologies into one system. The result is a completion system that eliminates the need for control lines, wash pipe, wireline, coiled tubing, and workover rigs for a 100-percent interventionless operation that reduces deployment risks.



Weatherford is the sole provider of RFID-enabled downhole tools. We pioneered the use of this proven technology to expand your capabilities and deliver real business benefits in drilling, cementing, and completions.

#### RFID TECHNOLOGY:

- Field-proven RFID in 200+ runs
- 10-Year RFID track record
- Bring the well online remotely
- Test independent barriers

### THE TR1P ADVANTAGE



#### INCREASE EFFICIENCY TO REDUCE COSTS

- Activate tools an unlimited number of times.
- Set and test selective upper and lower completions in a single trip.
- Achieve up to 60% rig-time savings.
- Reduce operational and rig spread costs.



#### ENHANCE OPERATIONAL FLEXIBILITY AND CONTROL

- Selectively target and actuate individual tools.
- Increase efficiency with 100% intervention-free operations.
- Boost flexibility with zero control lines, washpipe, coiled tubing, workover rig, or wet connects.



#### MANAGE RISKS AND MAXIMIZE REWARD

- Reduce total operating hours.
- Decrease the number of trips in the hole.
- Minimize exposure of field personnel.
- Eliminate major wellbore and thru-tubing interventions.

## ADVANCED SYSTEM COMPONENTS:



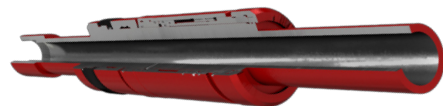
**RFID Optibarrier™ ball valve**  
controls wellbore flow as a reliable downhole barrier.



**RFID inflow control device**  
provides interventionless uniform inflow and outflow distribution.



**RFID OptiROSS remotely operated sliding sleeve**  
manages flow from individual production zones.



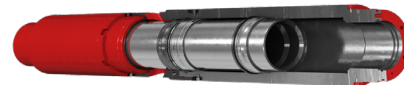
**Intelligent completion packoff element**  
enables zonal isolation for completions that require multiple-line bypass.



**OptiPkr™ production packer**  
delivers a gas-tight seal between the outside of the production tubing and the inside of the casing.



**Optimax™ tubing-retrievable safety valve** shuts in the well with a gas-tight seal in the event of uncontrolled flow.



**RFID reservoir isolation valve**  
provides a cost-effective, debris-tolerant means to isolate the completion system.

## DELIVERING REAL SAVINGS TO CUSTOMERS

Up to **60%**

reduction in rig-time savings  
by installing upper and lower  
completions in just one trip

**Deepwater Field Trials, Offshore West Africa:**  
Weatherford offers the world's first and only  
remote-activated installation system to deliver  
upper and lower completions in a single trip.

[weatherford.com/TR1P](http://weatherford.com/TR1P)



**Weatherford®**

© 2019 Weatherford. All rights reserved.

Weatherford products and services are subject to the Company's standard terms and conditions, available on request or at [weatherford.com](http://weatherford.com). For more information contact an authorized Weatherford representative. Unless noted otherwise, trademarks and service marks herein are the property of Weatherford and may be registered in the United States and/or other countries. Weatherford products named herein may be protected by one or more U.S. and/or foreign patents. Specifications are subject to change without notice. Weatherford sells its products and services in accordance with the terms and conditions set forth in the applicable contract between Weatherford and the client.