



FORMATION EVALUATION

# Interpretation and Evaluation Services

Understand, monitor, and optimize well performance



# Transform reservoir data into valuable insight and informed action.

Whether you are a major operator in need of specialty data analysis or a smaller company outsourcing petrophysical and geological duties, Weatherford can help you better understand your reservoir. Our capabilities extend beyond using our advanced wireline and logging-while-drilling (LWD) technologies to capture your required data. As a premier provider of interpretation and evaluation services, we evaluate the acquired data to help you make critical decisions.

Our extensive portfolio of answer products includes high-resolution borehole image interpretation, acoustic slowness and geomechanical applications, petrophysical analysis, and identification of well-integrity issues. Our consultants, who specialize in major operating regions around the world and who have a combined wealth of technical expertise across multiple disciplines, work alongside you to interpret data and to develop a solution for your specific needs. Through our collaboration, you receive crucial intelligence for defining reservoir and petrophysical properties, placing wells, optimizing completions, and maximizing production.



Analysis of Compact™ microimager and triple-combo tool data reduced geologic uncertainty in 5 deviated wells by

**80%**

.....

Interpretation of azimuthal LWD image helped to place

**5 additional wells**

in a fault-laden field

.....

## Answer Products

### Borehole Imaging

- Reveal 360™ image processing
- Depositional and stratigraphic interpretation
- Fracture characterization
- Geological facies analysis
- Image petrophysics
- Sand-spectrum analysis

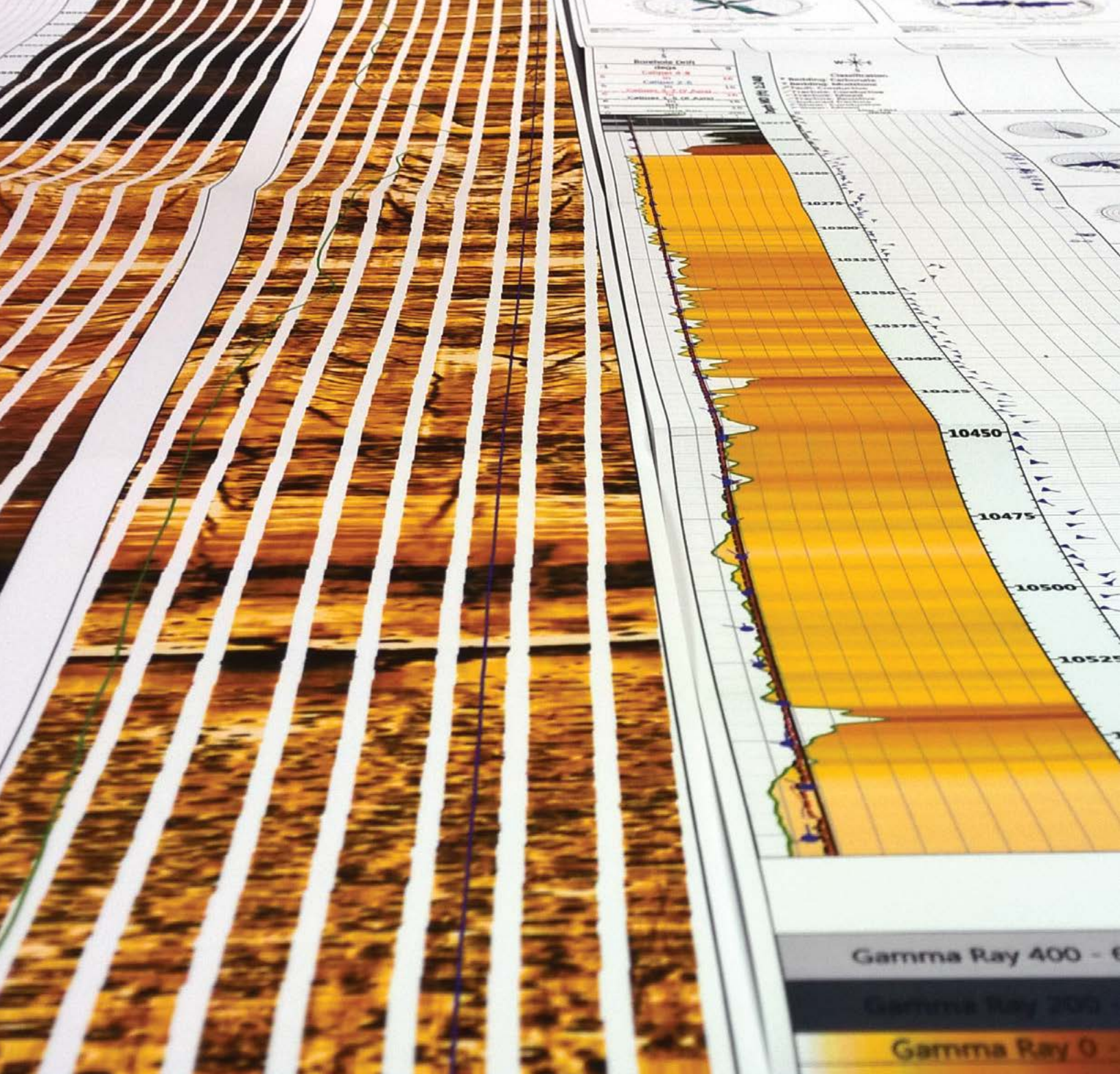
### Acoustics

- Compressional and shear slowness
- Anisotropic processing
- Mechanical rock properties
- Wellbore stability
- Fracture-growth prediction
- Pore-pressure prediction

### Petrophysics

- Petrophysical interpretations of single- and multi-well projects
- Nuclear magnetic resonance (NMR) interpretation for total porosity, permeability, and fluid identification
- Unconventional analysis
- Clay-type analysis





### Well Integrity

- Casing integrity and corrosion analysis
- Cement integrity analysis
- Interactive 3D presentations
- Burst pressure analysis
- Drift diameter analysis
- Foam cement analysis

### Production Petrophysics

- Single-, dual-, and multi-phase analysis
- Pulsed neutron sigma/CO processing
- Fluid-contact identification and monitoring

### Reservoir Evaluation

- Real-time pressure analysis
- Real-time fluid analysis
- Pressure transient analysis
- Distributed pressure analysis

Data interpretation and evaluation are just a few of the services we offer to help you maximize the value of your wells. For more information about our breadth of well- and field-optimization services, visit [weatherford.com](http://weatherford.com)



**Weatherford**<sup>®</sup>

[weatherford.com](http://weatherford.com)

© 2015–2016 Weatherford. All rights reserved. 12106.01

Weatherford products and services are subject to the Company's standard terms and conditions, available on request or at [weatherford.com](http://weatherford.com). For more information contact an authorized Weatherford representative. Unless noted otherwise, trademarks and service marks herein are the property of Weatherford and may be registered in the United States and/or other countries. Weatherford products named herein may be protected by one or more U.S. and/or foreign patents. Specifications are subject to change without notice. Weatherford sells its products and services in accordance with the terms and conditions set forth in the applicable contract between Weatherford and the client.