

WidePak™ Straddle Packer System

Provides Water-Shut-Off Solution in Gas Well
Reduces Water Cut 30%, Increases Production 300%
Riglessly Installed in 24 hours with Zero Incidents

Objectives

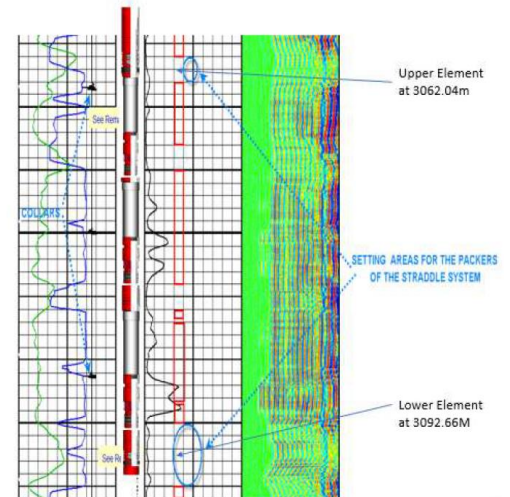
- Isolate a 98 ft (30 m) water-producing interval spanning multiple perforation zones in order to reduce water cut and increase production.
- The solution must also be retrievable, comprised of a V0-rated 13CR material, and installed riglessly—preferably via wireline.

Our Approach

- Weatherford Well Services specialists collaborated with the operator to conduct a thorough analysis of the well and its water-production problems. The specialists recommended installing the WidePak high-pressure straddle packer assembly to isolate the water-bearing zone.
- The multi-trip 450 WidePak straddle system was selected for its ability to provide temporary or permanent isolations and its large, packer throughbore that enables maximum production after setting. The fully retrievable WidePak straddle system was provided in 13CR material, featuring a 5,000 psi V0 rating.
- The system was deployed using both wireline and slickline. E-line was required to ensure the WidePak straddle system was set at the correct depth. This was critical to ensure the upper perforation zones maintained a 6.6-ft (2-m) spacing in-between.
- Due to the rig-up height limitations of the system, it was deployed in four sections to straddle the full 98-ft (30-m) section to be isolated.

Value to Customer

- The WidePak straddle packer isolated the water-bearing zone and revived gas production.
- The installation was completed in less than 24 hours with zero incidents using a wireline tower. This eliminated the need to mobilize a workover rig and saved the associated deployment time and costs.
- A post installation well test confirmed the water cut was successfully reduced from 87 to 56 percent. Subsequently, gas production increased 300%, from 249 m³ (1,566 BOPD) to 744 m³ (4,679 BOPD).



The Weatherford WidePak straddle system is a high-pressure packer used for temporary or permanent isolation of tubing sections, perforations, or windows. Its large packer throughbore is set in one run using slickline and enables maximum production after setting as well as many intervention operations.

LOCATION

Hassi Messaoud, Algeria

WELL TYPE

Gas Producer

HOLE SIZE

5-1/2 in. completion and liner

STRADDLE DEPTH

10,046 to 10,144 ft (3,062 to 3,092 m)

PRODUCTS/SERVICES

- Well Services
- Thru-tubing completions
- WidePak straddle packer system
- SO Tie Back
- WidePak Anchor

