

# AlphaST™ System Saves 29 Hours of Rig Time By Delivering a Single-Trip Openhole Sidetrack

## Objectives

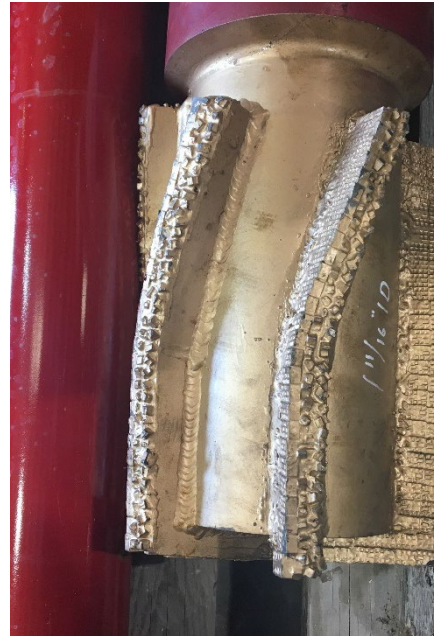
- Sidetrack from a pilot well in a single trip. Conventional cement sidetrack efforts failed in the hard formation. Previous attempts by competitors required multiple trips in the hole, resulted in damaged directional bottomhole assemblies (BHAs), and ultimately ended without success.
- Run a directional BHA with a polycrystalline diamond compact (PDC) bit in the hole to drill the lateral section immediately after the sidetrack operation.

## Our Approach

- Weatherford re-entry experts met with a Permian operator to discuss previously failed sidetrack operations for a pilot well.
- After reviewing the application, the Weatherford team recommended the AlphaST single-trip openhole cement and sidetrack system. The system consists of an IPP® inflatable production packer, which anchors the whipstock with 360° of contact against the formation to provide wellbore isolation.
- Weatherford re-entry experts quickly arrived at the rig to install the system. The team then deployed the AlphaST system in the pilot well.
- After the system landed at the required depth, the team set the IPP production packer to anchor the whipstock and drilled off the formation in a single trip.
- Finally, the operator was able to successfully run a directional BHA with a PDC bit to continue drilling the lateral section of the well immediately after the sidetrack operation.

## Value to Customer

- With single-trip efficiency and flexibility, the AlphaST system enabled the operator to anchor the whipstock with the IPP production packer and sidetrack from a pilot well, which saved days of rig time compared to conventional sidetrack operations. In contrast to previous attempts by competitors, the one-trip operation saved 29 hours of rig time valued at US \$108,000.
- In addition to efficiency and well integrity, the AlphaST system delivered total control of the kickoff point. The system facilitated a smooth transition for the PDC BHA to drill the lateral section of the well 70 hours ahead of schedule.



The AlphaST system contains two mills on the drilloff BHA to facilitate a quick departure from the original wellbore.

**LOCATION**  
Permian

**WELL TYPE**  
Onshore, pilot

**FORMATION**  
Sandstone

**HOLE SIZE**  
8-3/4 in. (222 mm)

**KICKOFF POINT**  
9,848 ft (3,001 m)

### PRODUCTS/SERVICES

- Re-entry services
- AlphaST single-trip openhole cement and sidetrack system

