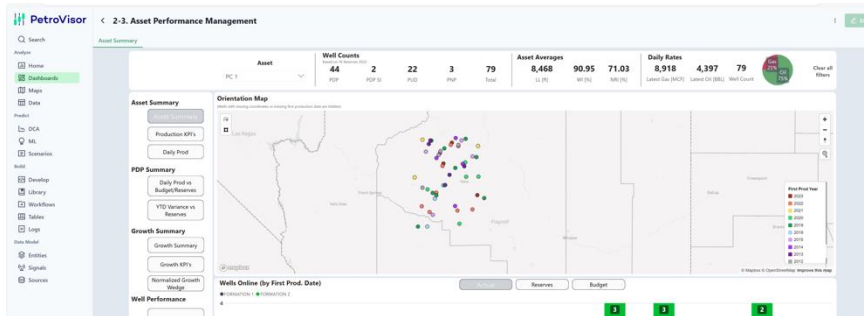


Integrated Well And Asset Performance Analysis Drives Venture Capital Investment Decisions Across Portfolio Companies



Asset summary dashboard provides integrated view of multi-asset and multi-well portfolio performance.

Client

The client, a venture capital (VC) group immersed in the Exploration and Production (E&P) sector, faced challenges managing separate, independent datasets across their diverse portfolio of operating companies. Their primary goal was to enhance their strategic planning capabilities through sophisticated type curve analysis, enabling them to evaluate new drilling opportunities and acquisition prospects more effectively.

Challenge

There was a need for a tool adept at not only handling extensive well-level data, including production, operational, and cost metrics, but also visualizing this data across a portfolio of companies. Specifically:

- 1. Data Fragmentation:** The client struggled with interpreting disparate data sets from various operating companies within their portfolio.
- 2. Type Curve Analysis:** There was a need for a tool adept at not only handling extensive well-level data, including production, operational, and cost metrics, but also visualizing this data across a portfolio of companies.
- 3. Strategic Planning:** Accurate prediction of future well performance was essential for evaluating new drilling opportunities and acquisition prospects.

Objectives

- **Growth Scenario Visualization:** The client aimed to view growth scenarios for their new drill acquisitions strategy.
- **Unified Platform:** A unified platform was required to view type curves from all operating companies in a single dashboard.

LOCATION
USA

CLIENT
Venture Capital Group with Portfolio of Multiple E&P Operating Companies

WELL TYPE
Multi-Asset Well Portfolios

FORMATION
Numerous Formation Types & Locations

SOFTWARE
PetroVisor
Asset Performance Management
Application Module



Objectives (Cont.)

- **Comparative Analysis:** The dashboard needed functionality to select and compare different operating companies, wells, and areas.
- **Trust but Verify:** The client sought a tool to "trust but verify" the operational performance of their portfolio companies.

Solution

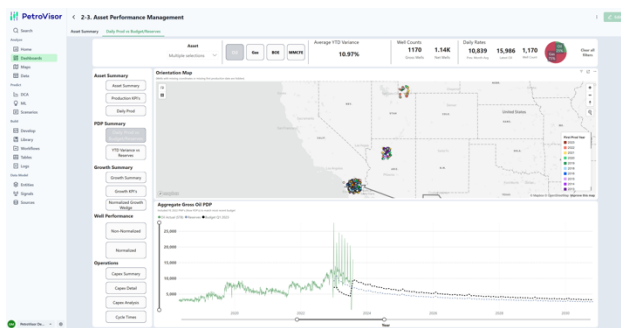
Weatherford's PetroVisor™

SaaS (Software as a Service) platform addressed these challenges by providing a horizontal unified data model capable of connecting to any data source. The solution was meticulously crafted layer by layer, bringing detailed data from multiple sources to the forefront. It effectively harmonized and scrutinized diverse data across multiple portfolio companies, enabling aggregation, normalization, and comprehensive analysis.

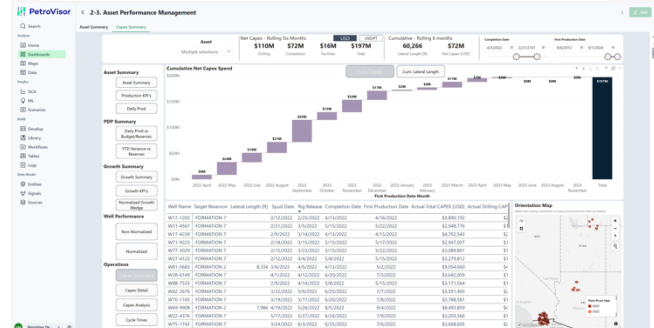
Results

1. **Data Synthesis for Informed Decision-Making:** By connecting to and pulling data from a myriad of sources and different portfolio companies, our platform synthesized a dashboard for asset performance management. This empowered the customer to quickly drill down to the specific data and context needed for their decision-making process.
2. **Comprehensive Dashboard Coverage:** The dashboard covered major areas of business concern for the VC group, including Asset, PDP, and Growth Summaries. It also featured a dedicated section for Well Performance through type curve comparisons and an Operations section focused on capital expenditures.
3. **Enhanced Strategic Planning:** The platform's features displayed static screenshots and qualitative business outcomes. Users gained the ability to trust but verify operational performance, solving the client's initial challenge of interpreting separate, independent data sets across operating companies.

In summary, our innovative solution not only streamlined the client's data analysis process but also empowered them to make informed, data-driven decisions in evaluating new drilling opportunities and acquisition prospects.



Easily assess across a large portfolio of operating assets daily production vs budget and reserves identifying over and underperforming assets to guide operational and strategic planning.



Integrating operational and financial data to inform CAPEX strategy. Evaluate new drilling opportunities and development more effectively.



Note: Screenshots based on genericized demo data.