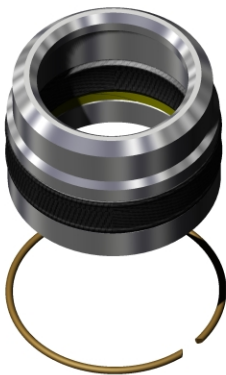




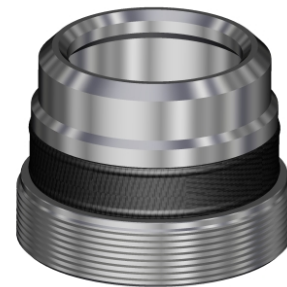
Bushing and Annulus Seals

Weatherford offers a wide range of wellhead auxiliary equipment. Our reducer bushings, secondary seals and packoffs are all designed for optimal performance with our casing and tubing spools. These high-quality products provide greater reliability and longer life to reduce downtime and overall costs.



WFT-PE reducer and seal assemblies are used as the standard secondary packoff for all WFT casing spools and tubing heads. These parts are pressure-energized and held securely in place with a snap ring.

WFT-HPPE high-pressure annulus seals provide a reliable seal to 15,000 PSI. An Acme-threaded lock ring holds the seals securely in place, with non-extrusion backup rings for greater reliability. These seals are available in various IDs and ODs for adapting casing spools and tubing heads to different casing sizes.



The **WFT-4-0 secondary seal reducer bushing** provides an O-ring seal around the casing.

Packoff/crossover flanges raise the pressure rating of an intermediate wellhead flange connection to the next higher-rated working pressure (for example, from 5,000 PSI to 10,000 PSI).





Bushing and Annulus Seals

Specifications

Product	Size (in.)	Weight (lb)
WFT-PE reducer and seal assemblies	7 × 4-1/2	28
	7 × 5-1/2	19
	9 × 4-1/2	60
	9 × 5-1/2	50
	9 × 7	30
	9 × 7-5/8	24
	10-3/4 × 8-5/8	40
10-3/4 × 9-5/8	20	
WFT-HPPE high-pressure annulus seals	7 × 4-1/2	40
	7 × 5-1/2	28
	9 × 4-1/2	86
	9 × 5-1/2	72
	9 × 7	46
	9 × 7-5/8	33
	10-3/4 × 8-5/8	58
10-3/4 × 9-5/8	33	