



Casing Hangers

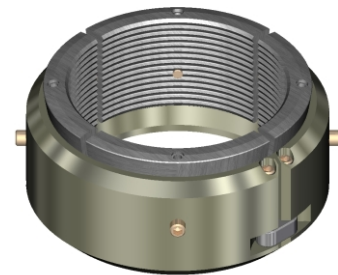
Models WFT-21, WFT-22 and WFT-29

Weatherford's WFT-series casing hangers, for light, medium and heavy casing loads, help protect costly damage to casing. WFT-21 casing hangers are segmented slips with no annulus seal. WFT-22 and WFT-29 hangers have automatic seals that are energized by the casing loads. All of these hangers can be lowered through blowout preventers (BOPs) and lock automatically when installed around the casing. The packoffs, slip bowls and slips are pre-assembled in a convenient single unit.

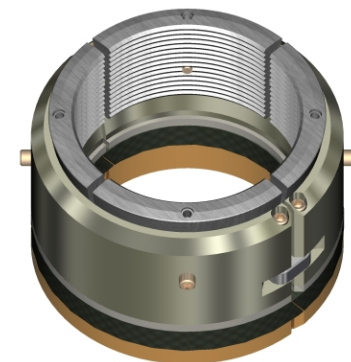
The **WFT Type H seal ring** isolates the hanger from between-flange test pressure. This ring is used with WFT casing heads or spools that do not have lockdown screws and is installed after the casing has been cut.



The **WFT-21 casing hanger** features segmented slips with no annulus seal and is typically used for minimal casing loads.



The **WFT-22 casing hanger**, featuring a wraparound design and automatic seals, fits WFT-22 casing heads and spools. This hanger is ideal for short casing strings, as it requires only a 50,000- to 60,000-lb casing load to energize the annulus seal. Compression seals in the annulus, below the slips, are energized by casing loads. The latch mechanism locks the hanger around casing when installed above the wellhead. The hanger can be lowered through the BOP stack or installed at the wellhead level.

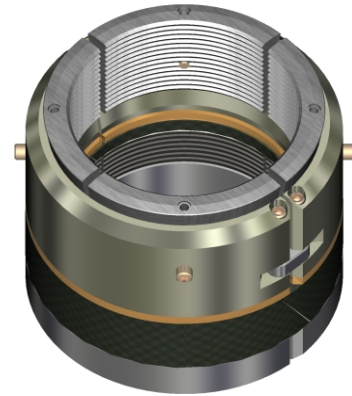




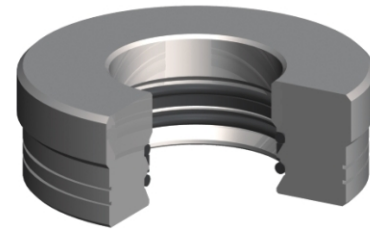
Casing Hangers

Models WFT-21, WFT-22 and WFT-29

The **WFT-29 casing hanger** fits WFT-29 casing heads and spools. This hanger features load-sharing slips that distribute heavy casing loads to reduce casing deflection and avoid casing collapse at high loads. As the upper slips move down and energize, the packoff and non-tapered lower slips engage automatically. The lower slips do not move down the slip bowl as conventional slips do, which reduces high compressive forces to help avoid casing collapse.



The **WFT-29 hanger isolation ring** fits WFT-29 casing spools only. Designed for 10,000- and 15,000-PSI working pressures, the isolation ring provides a second annulus seal and isolates the casing hanger from between-flange test pressures.





Casing Hangers

Models WFT-21, WFT-22 and WFT-29

Specifications

WFT-21 Casing Hangers	
Size (in.)	Weight (lb)
9 × 4-1/2	85
9 × 5	75
9 × 5-1/2	67
11 × 4-1/2	136
11 × 5	129
11 × 5-1/2	116
11 × 6-5/8	104
11 × 7	94
13-5/8 × 5	232
13-5/8 × 5-1/2	212
13-5/8 × 7	191
13-5/8 × 7-5/8	166
13-5/8 × 8-5/8	144
13-5/8 × 9-5/8	116
16-3/4 × 9-5/8	350
16-3/4 × 10-3/4	324

WFT-22 Casing Hangers			
Size (in.)	OD (in.)	Height (in.)	Weight (lb)
9 × 4-1/2	8-11/16	8-1/16	45
9 × 5			40
9 × 5-1/2			34
11 × 4-1/2	10-13/16		100
11 × 5			95
11 × 5-1/2			89
11 × 6-5/8			79
11 × 7			75
11 × 7-5/8	60		
13-5/8 × 5	13-7/16		170
13-5/8 × 5-1/2		160	
13-5/8 × 7		152	
13-5/8 × 7-5/8		140	
13-5/8 × 8-5/8		125	
13-5/8 × 9-5/8	108		
16-3/4 × 9-5/8	16-9/16	9	360
16-3/4 × 10-3/4			320
21-1/4 × 13-3/8	20-1/16	9	310

WFT-29 Casing Hangers			
Size (in.)	OD (in.)	Height (in.)	Weight (lb)
11 × 4-1/2	10-13/16	8-7/8	191
11 × 5			186
11 × 5-1/2			150
11 × 6-5/8			142
11 × 7			135
11 × 7-5/8	115		
13-5/8 × 5	13-7/16		310
13-5/8 × 5-1/2			298
13-5/8 × 7			266
13-5/8 × 7-5/8			258
13-5/8 × 8-5/8		210	
13-5/8 × 9-5/8	177		
16-3/4 × 9-5/8	16-9/16	10-3/8	265
16-3/4 × 10-3/4			254
21-1/4 × 13-3/8	20-1/16	9-3/8	288
21-1/4 × 16-3/4			166