



WFT-21P Casing Hanger

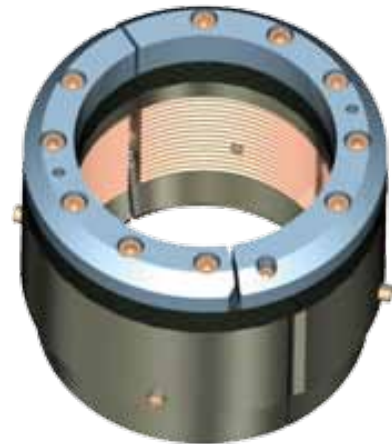
Weatherford's WFT-21P slip-type casing hanger provides reliable casing suspension and positive manual, annular sealing in all service environments. The WFT-21P casing hanger maximum-load capacity of 50 percent of pipe body yield is ideal for light- to medium-casing-load applications. The field-proven, straight-bowl design lands on a 45° load shoulder providing support, limited only by the capacity of the casing string. The casing hanger is used globally in the WFT-22 and WFT-29 wellhead-bowl profiles with or without lockscrews. This casing hanger is available in nominal sizes from 11 in. to 21-1/4 in. (279.4 mm to 539.75 mm).

Applications

- Land and offshore
- Light- to medium-casing-load situations with maximum working pressures of 10,000 psi (68.9 MPa)
- Shallow tieback casing strings
- Normal- and critical-service conditions

Features, Advantages and Benefits

- The WFT-21P casing hanger is readily available at all Weatherford wellhead locations worldwide.
- This casing hanger reduces total well cost versus mandrel casing hangers.
- The WFT-21P casing hanger is designed for easy installation and has a track record for reliability.



WFT-21P casing hanger.