



Weatherford®

REAL RESULTS

Wireline-Retrieveable BK-MSD Shear-Down Latch Eliminates Gas-Lift Problem, Increases Revenue by \$8.76 Million

Objectives

- Return a 100% oil-cut, high-productivity well in the Gulf of Mexico to production. The well was found to be gas-lifting from several valves. The well's severe deviation made it difficult to solve the problem using standard slickline and gas-lift tools. Attempts to change out the lower gas-lift valves using a roller stem did not work, and the well rate remained lower than modeling had predicted.

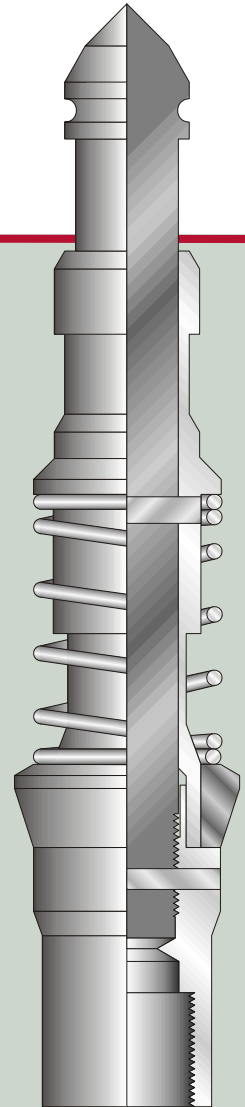
Results

- Weatherford used a wireline-retrieveable BK-MSD shear-down latch to lock the gas-lift valve into the mandrel pocket and quickly return the well to production at a rate 400 BOPD higher than before.

Value to Client

- The 400 BOPD production increase provides the operator with US\$8.76 million per year in additional revenue.

The unique shear-down feature of Weatherford's wireline-retrieveable BK-MSD latch keeps the gas-lift valve in the pocket and enables stepped-up production.



Location
Gulf of Mexico

Well Type
High-productivity gas-lift well

Hole Angle
55°

Casing Type and Size
7-in. with 5-in. liner

Products/Services

- Well modeling using nodal analysis
- Slickline troubleshooting
- Gas-lift valves with BK-MSD shear-down latch